

Welcome to the Caterpillar Pod  
2024-25



- Who are we?
- Our day
- How we learn
- What we learn
- Uniform and PE
- Expectations
- Communication
- Safeguarding
- Specialist support



Mrs Bryony Nester  
(SEN Teacher)

Mrs Kirsty Craven  
(SENCo)

Mr Tim Hallis  
(Inclusion  
Lead/Assistant Head)



Miss Summer Eburne  
(SEN HLTA)



Mrs Catherine  
Boardman (SEN TA)

Mrs Fatima Miah  
(Lunchtime Supervisor)

Monday

8:40 – 8:55	Open/Close gate Meet & Greet/Free flow/Sensory Room Arbor Registration
8:55 – 9:05	Circle time: <a href="#">Makaton - HELLO TEACHERS, HELLO FRIENDS - Singing Hands (youtube.com)</a> Self Registration , daily calendar with days of the week song. Phonics song for all (vary every few weeks and use UK sounds)
9:05 – 9:30	Phonics work with suitable chn.in group room – NL, RW Engagement work/target work/Tray tasks- others
9.30-9.40	Maths input
9.40-10.15	Tray Tasks/Maths work/Target work
10.15-10.30	Snack
10:30-11.00	Break with mainstream
11.00 - 11.15	Brain break and English input – sensory story/themed activity
10.55– 11.05	Personal care if required
11.15 - 11.55	Tray tasks, English work, target work
11:55-12.10	Tidy up then Story or Tv time
12:10-12:15	Wash hands/collect lunch
12:15-12:45	Lunch part 1 – 2 TA's & Lunch supervisor supporting
12:45--1.15	Lunch part 2 – 2 TA's supporting playtime, Lunchtime supervisor
1:15-1.25	Coats/wash hands etc. Calming brain break - stretching
1.25-1.35	Attention Autism Curiosity boxes
1.35-2.00	Tray tasks/Target work /Choosing
1.50-2.00	Personal care – 2 TA's while others finish individual work
2.00 - 2.30	Curriculum group work/Intensive Interaction/Choosing
2.30-2.45	Group singing/PA work
2.45-3.00	Snack/Calming time (calm music/sensory visuals on board)
3:00-3.15	Shoes/bags. Sitting a songs on TV Home time

## How we work.

- Group work
- Tray tasks
- Individual
- Small group work
- Play based learning.
- Focus on Communication and Interaction
- Core subjects and Curriculum at an appropriate level for all





## Areas of Learning

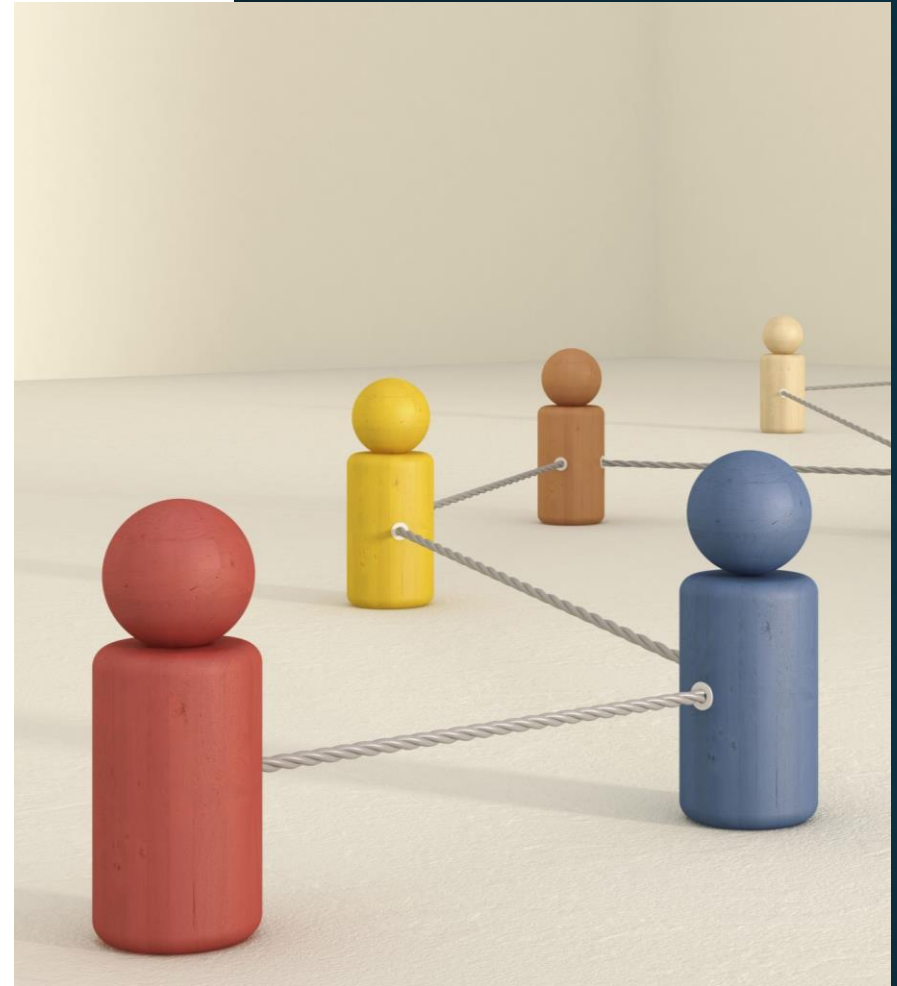
- My Communication and Language
- Myself and Others
- Literacy/Phonics
- Numeracy
- My Body
- My World
- Learning for Life
- Creative Me



## **Uniform and PE**

- All items need to be clearly named.
- Castle polo shirt and grey trousers, shorts, skirts or tunic.
- No jewelry please, other than stud earrings.
- Earrings must be removed for PE (no tape). They cannot be removed by adults in school.
- PE – black shorts or joggers with a white t-shirt and trainers
- At least 2 spare changes of clothes please (don't have to be uniform)
- Wellies and puddle suits

- **Expectations**
- Behaviour is communication
- Boundaries and routine
- Promote improved social communication
- Social stories and visual supports





- **Home/School books**



- **Safeguarding**
  - Top priority
  - Child focused
  - Robust policies and procedures
  - Duty of care and legal responsibility
- **First Aid**



## **Specialist support**

- Speech and Language Therapists
- Occupational Therapists
- Educational Psychologists
- The Local Offer

## **Enrichment**

- Rag Dolly Anna's
- Christmas
- Sports Day
- Special visits
- A trip!

Questions?

